

THE EXHIBIT

The Newsletter of UL Lafayette Science Museum



Letter from the Director

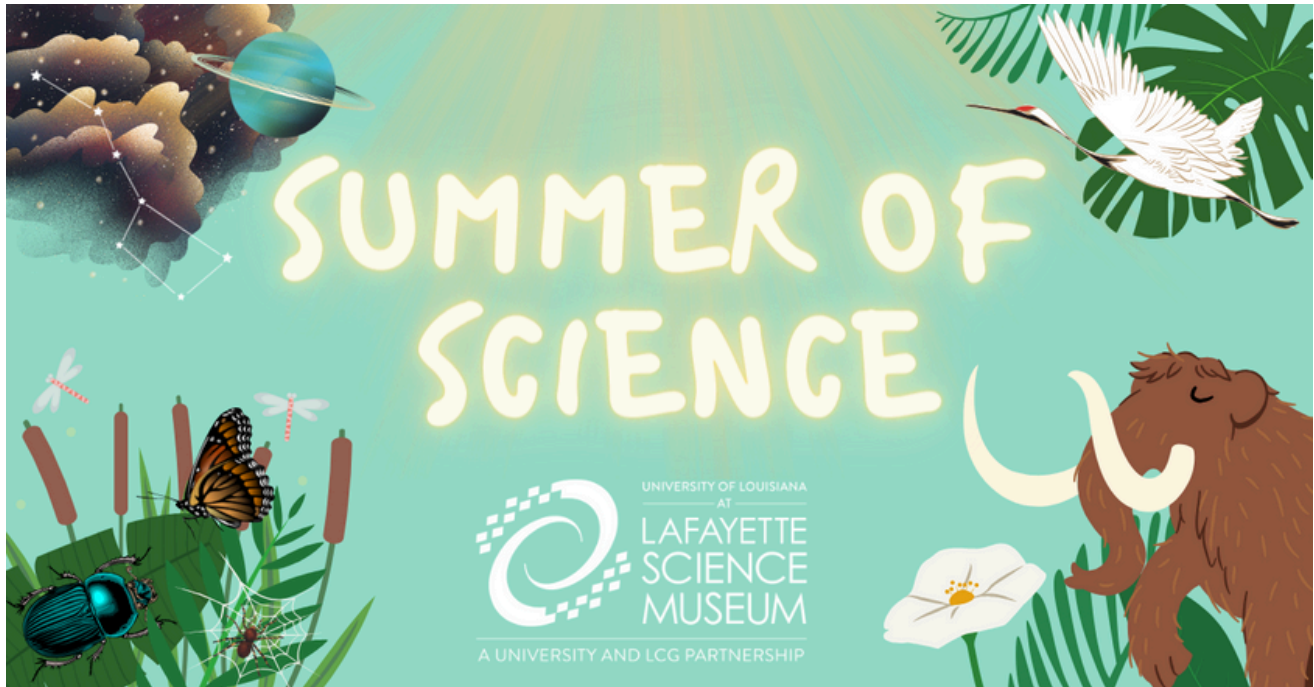
DR. JENNIFER E. HARGRAVE, UL LAFAYETTE SCHOOL OF GEOSCIENCES



Greetings! Our Summer of Science is here. This special summer newsletter is all about the exciting events and plans we have to fill your summer with science. Become a UL Lafayette Science Museum member and enjoy everything we have to offer this summer and throughout the year. We're offering a 10% discount on memberships at our Summer of Science kick-off event Saturday, June 8. Then throughout the month of June, you'll receive a discount on mugs and tumblers in our gift shop with your membership purchase.

Summer is the perfect time to make the most of your membership. Museum memberships help us fulfill our mission to provide informative and interactive experiences in STEM fields to the community, K-12 and University students, provide innovative research opportunities and preserve current and future museum collections for use in exhibits, classrooms and scientific research. If this is a mission you believe in, consider showing your support with a membership, sponsorship or other donation. There are several ways individuals and businesses can play a pivotal role in the museum and its mission with financial support or in-kind donations. For more information about these opportunities, please contact me by [email](#) or call 337-482-0678.

Best wishes for a science-filled summer,
Dr. Jennifer Hargrave, Museum Director



Summer of Science Kick-off

SATURDAY, JUNE 8 FROM 10AM - 3PM

Join us as we kick off our SUMMER OF SCIENCE on June 8, 2024, from 10am-3pm at UL Lafayette Science Museum. It will be a big day as we officially open our newest exhibit Prehistoric Louisiana: A Journey Through Ice Age Acadiana.

It's also STEM Saturday: Fossil Fun and we'll have extra educational activities all about fossils. STEM Saturdays are possible with support from a grant from Halliburton and offer extra educational activities included with regular museum admission.

We'll offer 10% off museum membership purchases all day so you can keep the fun going all Summer of Science long! And through the month of June you'll receive a discount on mugs and tumblers from our gift shop with the purchase of a museum membership.

From 10:30am to noon, we'll have our telescopes out for safe solar and sun spot viewing and we may even be able to see the faint crescent moon, weather permitting. From 1-3pm, Dip and Dabble Face Painting will visit the museum to offer extra festive summer fun!

Tour exhibits, catch a planetarium show, learn about fossils and prehistoric life in Ice Age Acadiana, peer through a telescope for sidewalk solar astronomy, and more! Get your summer passport (see page 7), complete activities all summer, and be entered to win a behind the scenes museum tour for you and your family!

CALENDAR OF EVENTS

**SUMMER KICK-OFF -
JUNE 8**

**STEM SATURDAY: FOSSIL
FUN - JUNE 8**

**NEW EXHIBIT OPENING:
PREHISTORIC LOUISIANA
- JUNE 8**

**POP-UP SCIENCE- JUNE
12 & JULY 17**

**DOCUMENTARY DATE
NIGHT - JUNE 20 & JULY
25**

**PLANETARIUM
MARATHON - JULY 10-12**

**STEM SATURDAY - JULY
13**



Journey Through Ice Age Acadiana



Our summer kick-off will feature the Grand Opening of our latest exhibit Prehistoric Louisiana: A Journey Through Ice Age Acadiana. Dr. Hargrave's GEOL 422 Museum Methods class helped develop the new fossil exhibit and were involved in prepping fossil casts for display, putting together skeletons, and writing the text for the signage. A group of dedicated volunteers prepared skeletons, set up cases and created a mural and displays. The exhibit is supported by generous sponsors Dr. James E. Martin, Silverstone Resources Inc., and the John E. and Elizabeth W. Bishop Trust

Volunteer with Us!



Help us fulfill our mission of providing educational science experiences for visitors of all ages by volunteering as a museum docent. By learning about our exhibits, answering questions, interacting with museum visitors and field trip students, and helping to lead activities for school groups and STEM Saturdays, you will aid visitors in making the most of their time at the museum.

Complete our [Volunteer Form](#) and we will contact you with more information and training dates.

New Exhibit Open Now



A new exhibit: Highlighting African American Scientists from Louisiana is now open. The exhibit features the stories of 10 scientists from Acadiana. The exhibit was created in collaboration with Jordan Sandler, former KADN meteorologist and journalist. Through the exhibit, visitors can learn about how these scientists developed an interest in fields, their motivations, as well as their educational and career experiences.

Become a Member!



UNIVERSITY OF LOUISIANA
AT
LAFAYETTE
SCIENCE
MUSEUM



A UNIVERSITY AND LCG PARTNERSHIP

Summer is the perfect time to become a member of UL Lafayette Science Museum. Memberships support our educational mission, outreach efforts and the creation of new exhibits. Visit anytime with your membership and never miss an exhibit, planetarium show or event. Memberships are valid for 12 months from the purchase date and count as charitable gifts for tax purposes. General and Premium levels are available. Benefits include unlimited free visits to museum & planetarium; our e-newsletter The Exhibit, invitations to member-only previews & events; free admission to over 360 museums and science centers worldwide through the ASTC Travel Passport Program; a Museum Stored discount (varies by level); & discounts on camps, classes, & some events.



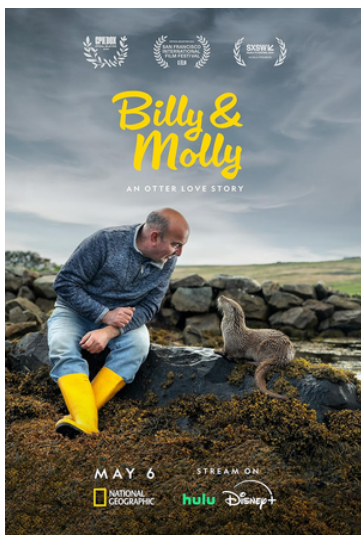
Documentary Date Night

SCIENCE FILMS IN THE MUSEUM

Through a generous sponsorship by Aqueos, we are able to continue Documentary Date Night! At this fun event, we'll show a documentary film in the museum. Bring a date, bring a friend or just yourself for an evening at the museum. Attendance for the educational film screening is free and will be followed by a discussion.

On Thursday, June 20 at 7pm, we will screen the documentary "Billy and Molly: An Otter Love Story," the story of a man who forms an unlikely friendship with a wild otter while living in the remote Shetland Islands. Then on Thursday, July 25 at 7pm, we will screen the documentary "Into the Okavango," which chronicles a team of modern-day explorers on their first epic four-month, 1,500-mile expedition across three countries to save the river system that feeds the Okavango Delta, one of our planet's last wetland wildernesses.

The film screening is free, and concessions will be for sale (cash only) at the event. Doors open at 6:30pm and the film starts at 7pm. Concession sales benefit the museum and allow us to continue to offer unique programming.



SPONSORED BY



In the Planetarium

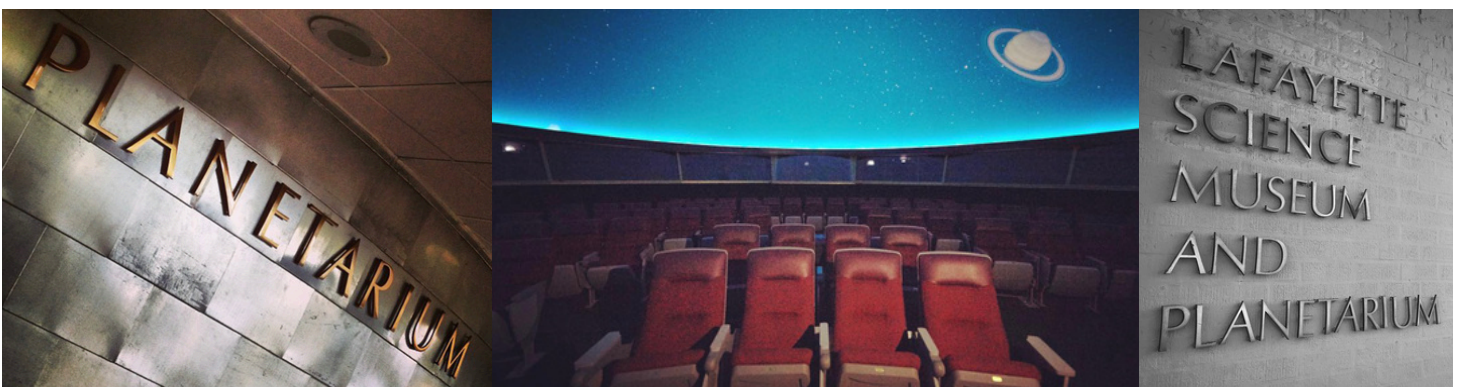
JUNE & JULY SCHEDULE

The universe awaits in our state-of-the-art, all-digital, full-dome planetarium! Currently, planetarium shows run every Friday at 4 p.m. and through the weekend with a Saturday morning children's program at 11:15 a.m. Programs continue Saturday and Sunday at 1:30, 2:45 and 4 p.m. Starting in June, we will offer an 11:15 am children's program and a 2:45 pm general program on Wednesdays, Thursdays and Fridays all summer.

JUNE	Wednesday	Thursday	Friday	Saturday	Sunday
11:15 a.m.	Earth, Moon & Sun	Earth, Moon & Sun	Earth, Moon & Sun	Earth, Moon & Sun	
1:30 p.m.				2 Small Pieces of Glass	2 Small Pieces of Glass
2:45 p.m.	The Sky Tonight/ Discover the Stars	The Sky Tonight/ Discover the Stars	The Sky Tonight/ Discover the Stars	The Sky Tonight/ Discover the Stars	The Sky Tonight/ Discover the Stars
4:00 p.m.				Stars	Stars

JULY	Wednesday	Thursday	Friday	Saturday	Sunday
11:15 a.m.	Larry Cat in Space	Larry Cat in Space	Larry Cat in Space	Larry Cat in Space	
1:30 p.m.				We Are Astronomers	We Are Astronomers
2:45 p.m.	The Sky Tonight	The Sky Tonight	The Sky Tonight	The Sky Tonight	The Sky Tonight
4:00 p.m.				To Space & Back	To Space & Back

**As we work to grow our planetarium team, our live planetarium show "The Sky Tonight" or an alternate program will be shown based on staff availability.*





Planetarium Marathon

BINGE WATCH ALL YOUR FAVORITE PLANETARIUM CONTENT

We're thrilled to announce the return of the Planetarium Marathon, which will run July 10-12, 2024. Enjoy six planetarium programs a day for three days in a row! And the only program that will repeat is 'The Sky Tonight' live program at 4 p.m. each day. Some programs are designed for children while most will be for the general public. Topics include constellations, telescopes, planets, stars, galaxies, space flight, and more – pick your preference or see 'em all! Planetarium programs generally last 35 to 40 minutes. They begin promptly and late entry is not possible. People of all ages are welcome, but programs may overwhelm pre-schoolers because of darkness, length, and more. Please be prepared to exit the planetarium if your child becomes disruptive.

	<i>Wednesday</i>	<i>Thursday</i>	<i>Friday</i>
10:00 am	Skywatchers of Africa	We Choose Space	In Search of Cosmic Origins
11:00 am	*Earth, Moon & Sun	*Flight Adventures	*Secret of the Cardboard Rocket
1:00 pm	Cosmic Journey	Dawn of the Space Age	Awesome Light
2:00 pm	Mayan Archaeoastronomy	Black Holes	From Earth to the Universe
3:00 pm	*Accidental Astronauts	*Larry Cat in Space	*Little Star That Could
4:00 pm	The Sky Tonight	The Sky Tonight	The Sky Tonight

* Children's program. All ages are welcome, but the program is best for elementary school children.



COMPLETE 5 PASSPORT ACTIVITIES THIS SUMMER!

Get a stamp by your activities at
the museum front desk:

- STEM SATURDAY
- POP-UP SCIENCE
- PLANETARIUM SHOW
- SELFIE WITH T. REX
- SCAVENGER HUNT
- ASK A GUIDE A
QUESTION
- SUMMER KICK-OFF
- DOCUMENTARY DATE
NIGHT
- HOLD A METEORITE
- LOOK THROUGH A
TELESCOPE

Name: _____

Phone: _____

Email: _____

ENTER A DRAWING FOR A CHANCE TO WIN A BEHIND THE SCENES TOUR OF THE MUSEUM, GEOLOGY LAB, COLLECTION AND PLANETARIUM FOR THE WINNER'S FAMILY. SIGN-UP FOR YOUR PASSPORT FOR ONE ENTRY, COMPLETE THE PASSPORT FOR A SECOND ENTRY, AND MUSEUM MEMBERS RECEIVE A THIRD ENTRY IN THE DRAWING.

DRAWING TO BE HELD AUGUST 1, 2024.